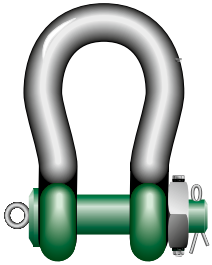


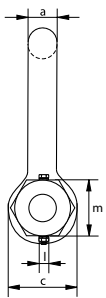
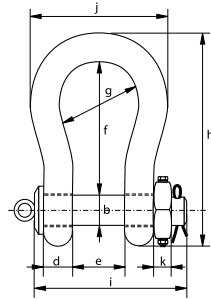


Green Pin Polar® Heavy Duty Bow Shackle FN

High load capacity, grade 8 bow shackle with safety bolt and fixed nut for use under low temperatures



P-6011



- **Material:** bow and pin alloy steel, grade 8, quenched and tempered
- **Safety Factor:** MBL equals 5 x WLL
- **Standard:** ASME B30.26
- **Finish:** 120 tons shackle: hot dipped galvanized
150 tons shackle: bow painted silver, pin painted green
- **Temperature range:** -40°C up to +200°C
- **Certification:** 2.1 2.2 3.1 MTC^a MTC^b * LROS * MPI^a US^a CE

working load limit	diameter bow	diameter pin	diameter eye	width eye	width inside	length inside	width bow	length	length bolt	width	thickness nut	securing bolt thread	securing bolt length	torque	weight each
t	a	b	c	d	e	f	g	h	i	j	k	l	m	Nm	kg
120	95	95	208	95	147	399	238	646	453	428	50	M12	150	68	110
150	105	108	238	105	169	410	275	688	496	485	50	M12	160	68	160

In inch

working load limit	diameter bow	diameter pin	diameter eye	width eye	width inside	length inside	width bow	length	length bolt	width	thickness nut	securing bolt thread	securing bolt length	torque	weight each
t	a	b	c	d	e	f	g	h	i	j	k	l	m	ft lb	lbs
120	3 3/4	3 3/4	8 3/16	3 3/4	5 25/32	15 3/4	9 3/8	25 15/32	17 27/32	16 27/32	1 31/32	M12	5 29/32	50.1	243
150	4 1/8	4 1/4	9 3/8	4 1/8	6 21/32	16 5/32	10 13/16	27 3/32	19 17/32	19 3/32	1 31/32	M12	6 5/16	50.1	353

* For shackles ≥ WLL 150 t