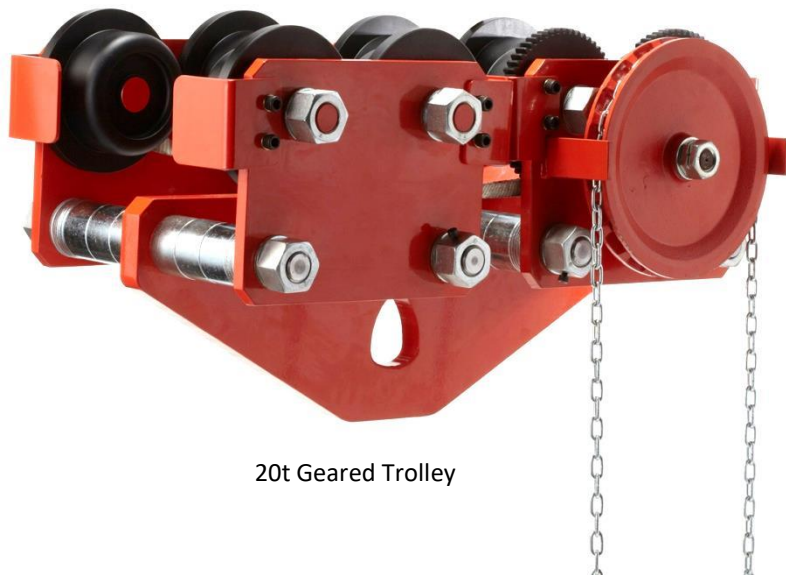




Tiger Trolley

Model No. TG/TP



20t Geared Trolley



1t Geared Trolley with optional beam locking device

Main Features

- Plain Trolley Range from 0.5t to 10.0t
- Geared Trolley Range from 0.5t to 30.0t
- The anti-drop plates design ensures extra safety, and also prevents damage to the wheels when contacting end rail stoppers
- Tiger trolley wheels are specially designed with a convex profile eliminating potential point loading
- The wheels run on sealed bearings for smoother rolling with less effort and maintenance
- Twin bar or single bar trolleys available
- Geared type available (with hand chain length to suit your requirements)
- Extended beam width available
- Corrosion or Spark Resistant versions available
- Operating temperature of -30°C to +100°C (temperature range of -50°C to +100°C available as an option)
- Optional beam locking device
- The 5:1 factor of safety allows for use with manual or powered hoists

These units meet and exceed all the requirements within BS EN 13157: 2004+A1:2009 and AS1418.2.

Certification:

Each unit comes fully certified with a test certificate or an EC Declaration of Conformity stating compliance with the essential health and safety requirements of the Machinery Directive 2006/42/EC.



Corrosion Resistant Trolleys

Critical components, including the hand chain and the pinion gear for geared trolleys, are protected by our OCP (Organic Compound Protection) finish giving unprecedented long-term reliability. Stainless steel fittings are used throughout the trolley. These ensure the initial capital outlay of purchasing a Tiger corrosion resistant trolley is protected by allowing the statutory inspections and re-certifications to be easier and also help with the overall aesthetics of the trolley being maintained in an "as new" condition. Our corrosion resistant trolleys are finished in our high quality white Akzo Nobel powder coat paint offering excellent additional corrosion protection and a high degree of impact protection.

Spark Resistant Trolleys

In many areas of industry, plants are operated with potentially explosive atmospheres. Due to the very high risk to personal and other assets, extremely strict guidelines and technical requirements are in place in explosive zones. Tiger Spark Resistant products are manufactured in accordance with ATEX Directive 94/9/EC and the Machinery Directive 2006/42/EC. Our products are lightweight and durable with a proven track record. Atex marking: Ex II 2 GD c IIC T4 IIIC T135°C. Suitable for gas and dust hazardous areas: Zone 1 & 2 (gas) and Zone 21 & 22 (dust).

- Plain or geared trolleys available
- Solid bronze trolley wheels
- Rubber buffers for trolleys
- Copper plated hand wheel (geared trolley) and hanging plate
- Special corrosion protected body
- Combination block and trolley units available

Optional

- Beam locking device



Photo Gallery



10t geared trolley

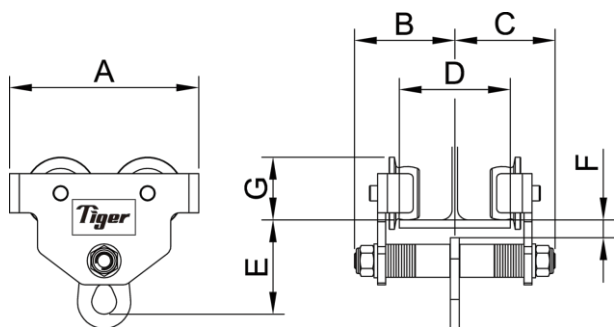


20t geared trolley
(rear view)

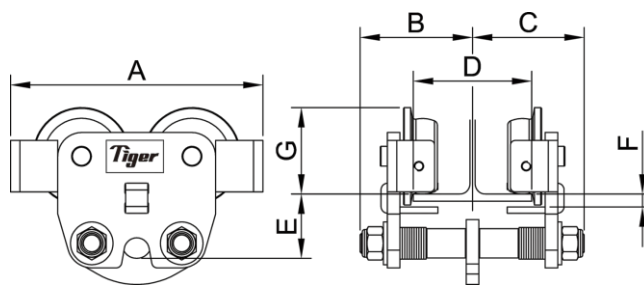


Technical Data - Plain Trolleys

| | Product Code | Capacity (tonne) | D - Track width # | | Dimensions (mm) | | | | | | | | | Min. curve ratio (m) | Net Weight (kg) |
|---------------------|--------------|------------------|-------------------|--------------|-----------------|-----|-----|-----|-----|-----|----|----|-----|----------------------|-----------------|
| | | | Range 1 (mm) | Range 2 (mm) | A | B | C | E | F | G | H | J | K | | |
| Single Bar Trolleys | TPS-0050 | 0.5 | 62-128 | 62-203 | 195 | 106 | 106 | 98 | 20 | 64 | 10 | 24 | 30 | 0.8 | 5.0 |
| | TPS-0100 | 1.0 | 62-128 | 62-203 | 213 | 113 | 113 | 106 | 20 | 71 | 10 | 27 | 34 | 1.0 | 7.5 |
| | TPS-0200 | 2.0 | 88-154 | 88-230 | 236 | 136 | 136 | 132 | 25 | 80 | 13 | 38 | 46 | 1.3 | 12.0 |
| | TPS-0300 | 3.0 | 88-153 | 88-230 | 270 | 146 | 146 | 150 | 25 | 97 | 13 | 42 | 53 | 1.5 | 19.5 |
| | TPS-0500 | 5.0 | 106-194 | 106-305 | 323 | 169 | 169 | 174 | 30 | 117 | 16 | 46 | 59 | 1.5 | 30.5 |
| Twin Bar Trolleys* | TPT-0300 | 3.0 | 88-153 | 88-230 | 320 | 142 | 142 | 82 | 16 | 110 | | | | 1.5 | 22.0 |
| | TPT-0500 | 5.0 | 106-194 | 106-305 | 352 | 167 | 166 | 91 | 24 | 131 | | | | 1.5 | 35.5 |
| | TPT-1000 | 10.0 | 150-320 | N/A | 460 | 255 | 255 | 248 | 42‡ | 182 | 23 | 74 | 100 | 2.7 | 135.5 |



Single Bar



Twin Bar

Technical Data - Geared Trolleys

| | Product Code | Capacity (tonne) | D - Track width # | | Dimensions (mm) | | | | | | | | | Min. curve ratio (m) | Net Weight (kg) |
|---------------------|--------------|------------------|-------------------|--------------|-----------------|-----|-----|-----|-----|-----|----|-----|-----|----------------------|-----------------|
| | | | Range 1 (mm) | Range 2 (mm) | A | B | C | E | F | G | H | J | K | | |
| Single Bar Trolleys | TGS-0050 | 0.5 | 62-128 | 62-203 | 195 | 165 | 106 | 98 | 20 | 64 | 10 | 24 | 30 | 0.8 | 9.0 |
| | TGS-0100 | 1.0 | 62-128 | 62-203 | 213 | 170 | 113 | 106 | 20 | 71 | 10 | 27 | 34 | 1.0 | 11.0 |
| | TGS-0200 | 2.0 | 88-154 | 88-230 | 236 | 182 | 136 | 132 | 25 | 80 | 13 | 38 | 46 | 1.3 | 16.5 |
| | TGS-0300 | 3.0 | 88-153 | 88-230 | 270 | 184 | 146 | 150 | 25 | 97 | 13 | 42 | 53 | 1.5 | 24.5 |
| | TGS-0500 | 5.0 | 106-194 | 106-305 | 323 | 210 | 169 | 174 | 30 | 117 | 16 | 46 | 59 | 1.5 | 35.5 |
| Twin Bar Trolleys* | TGT-0300 | 3.0 | 88-153 | 88-230 | 320 | 181 | 142 | 82 | 16 | 110 | | | | 1.5 | 27.0 |
| | TGT-0500 | 5.0 | 106-194 | 106-305 | 352 | 202 | 166 | 91 | 24 | 131 | | | | 1.5 | 40.0 |
| | TGT-1000 | 10.0 | 150-320 | N/A | 460 | 335 | 255 | 248 | 42‡ | 182 | 23 | 74 | 100 | 2.7 | 150.0 |
| | TGT-2000 | 20.0 | 150-320 | N/A | 930 | 335 | 255 | 270 | 42‡ | 182 | 35 | 85 | 95 | 6.0 | 356.0 |
| | TGT-2500 | 25.0 | 150-320 | N/A | 930 | 335 | 255 | 278 | 42‡ | 182 | 38 | 100 | 115 | 6.0 | 363.0 |
| | TGT-3000 | 30.0 | 150-320 | N/A | 990 | 348 | 267 | 288 | 42‡ | 182 | 38 | 100 | 115 | 6.0 | 368.0 |

Standard geared trolley hand chain length – 2.5m. We can change the length to suit your requirements.

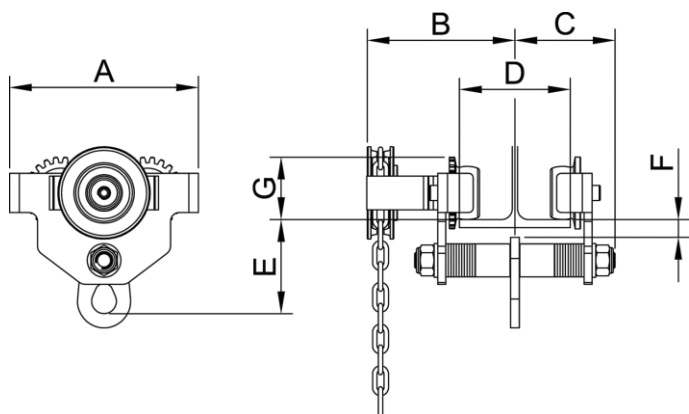
Notes:

H is the thickness of the anchor point, **J** is the width of the anchor point opening and **K** is the height of the anchor point opening.

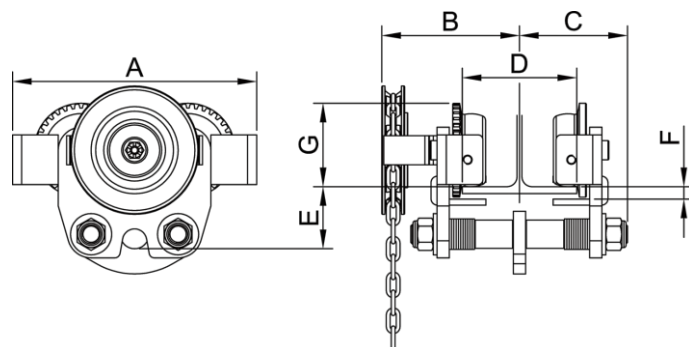
* 0.5t-2t twin bar available as special orders – minimum order 100 each size – please contact us for details.

‡ A beam flange thickness up to 50mm can be accommodated if required – please ask for more information.

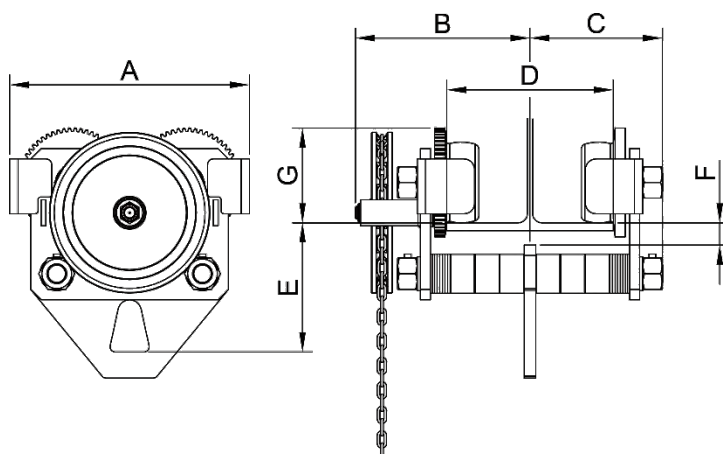
Please contact us for track widths outside of these ranges.



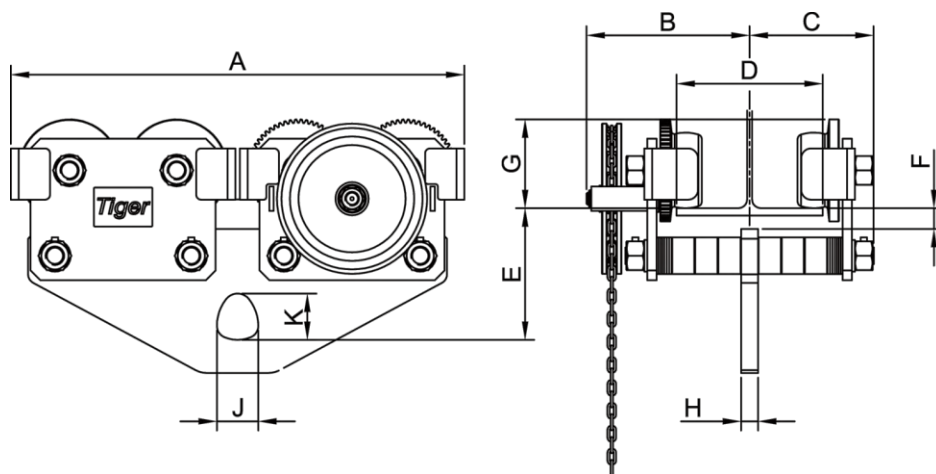
Single Bar



Twin Bar 3.0t & 5.0t



Twin Bar Trolley 10.0t



Twin Bar Trolley 20.0t – 30.0t