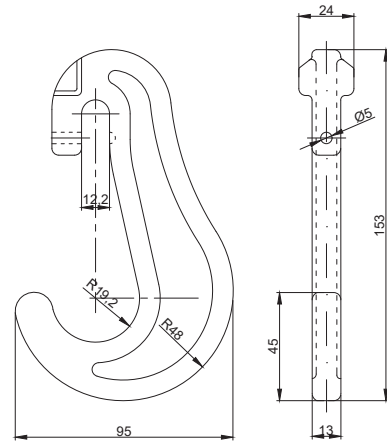




Reference: **HO-1310**  
Description: **C-HOOK 9mm**  
Weight [kg]: 0,6  
Material: Drop forged steel

Breaking load Tension [kN]: 100  
Breaking load Shear [kN]: -

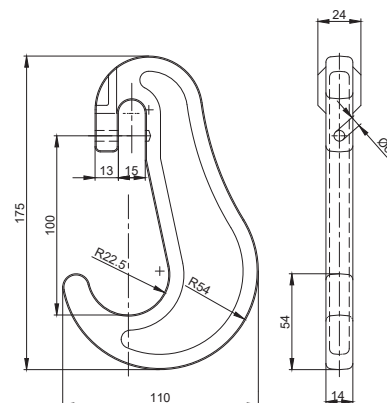
Finish: Powder coated or dipped  
Remarks: To be used with 9 mm chain.



Reference: **HO-1315**  
Description: **C-HOOK 11mm**  
Weight [kg]: 0,85  
Material: Drop forged steel

Breaking load Tension [kN]: 150  
Breaking load Shear [kN]: -

Finish: Powder coated or dipped  
Remarks: To be used with 11 mm chain.





Reference: **HO-1321**  
Description: **C-HOOK 13mm**  
Weight [kg]: 1,3  
Material: Drop forged steel

Breaking load Tension [kN]: 200  
Breaking load Shear [kN]: -

Finish: Powder coated or dipped  
Remarks: To be used with 13 mm chain.

