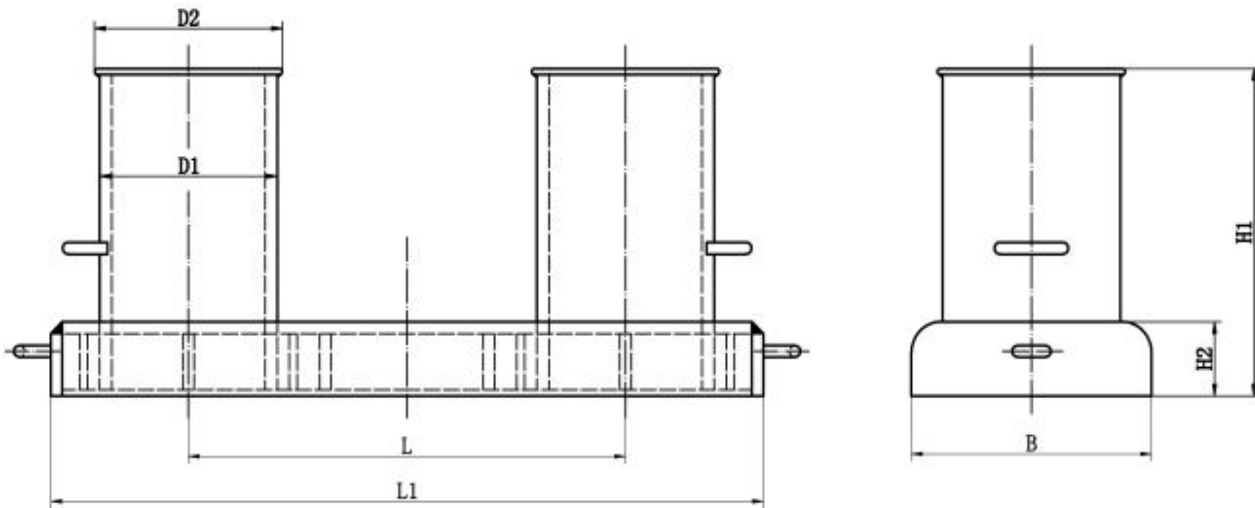




The welded steel bollard is a double bitt bollard according to the standard of ISO13795, suitable for installation on sea-going vessels to meet normal mooring and towing requirements.

Depending on the construction, the mooring bollards shall be classified as two types, which are Type A – with compact base plate and Type B – with a wide base plate.



Dimensions (mm)							Mooring SWL(T)		Towing SWL(T)		Mass(kgs)
Nominal Size Dn	D1	D2	L	L1	B	H1	H2	1-ROPE	2-ROPES		
150	165,2	185	400	670	225	320	80	5,5	5	10	45
200	216,3	240	500	860	290	365	85	8,4	6,7	13	68
250A	267,4	290	630	1065	360	470	100	16	14	27	150
250B	267,4	290	630	1065	360	470	100	13	11	22	119
300A	318,5	340	800	1300	430	575	125	34	31	62	383
300B	318,5	340	800	1300	430	575	125	19	16	36	203
350A	335,6	380	890	1475	480	655	145	45	43	85	582
350B	335,6	380	890	1475	480	655	145	25	22	50	333
400A	406,4	430	1000	1630	550	705	160	61	53	106	793
400B	406,4	430	1000	1630	550	705	160	33	27	67	441
450A	457,2	480	1100	1810	620	745	170	77	62	124	979
450B	457,2	480	1100	1810	620	745	170	39	30	78	517
500A	508	530	1250	2040	690	790	190	101	77	154	1321
500B	508	530	1250	2040	690	790	190	47	33	93	631
550A	558,8	580	1380	2240	750	840	210	115	83	165	1530
550B	558,8	580	1380	2240	750	840	210	80	55	159	1059
600	609,4	630	1550	2490	820	875	225	143	97	193	1850