

Beam Clamp with Shackle Model No. BCS



Main Features

- Range from 1.0t to 10.0t
- Quick and versatile rigging point for hoisting equipment
- Shackle suspension point
- Highly flexible – for lifting, pulling or as an anchor point
- Multidirectional adjusting screw spindle for easy attachment and safe and secure grip
- Wide Beam flange adjustment range
- Operating temperature of -50°C to +50°C
- 5:1 factor of safety
- Optional locking device



With optional locking device

These units meet and exceed all the requirements within BS EN 13155:2003+A2:2009 and AS4991.

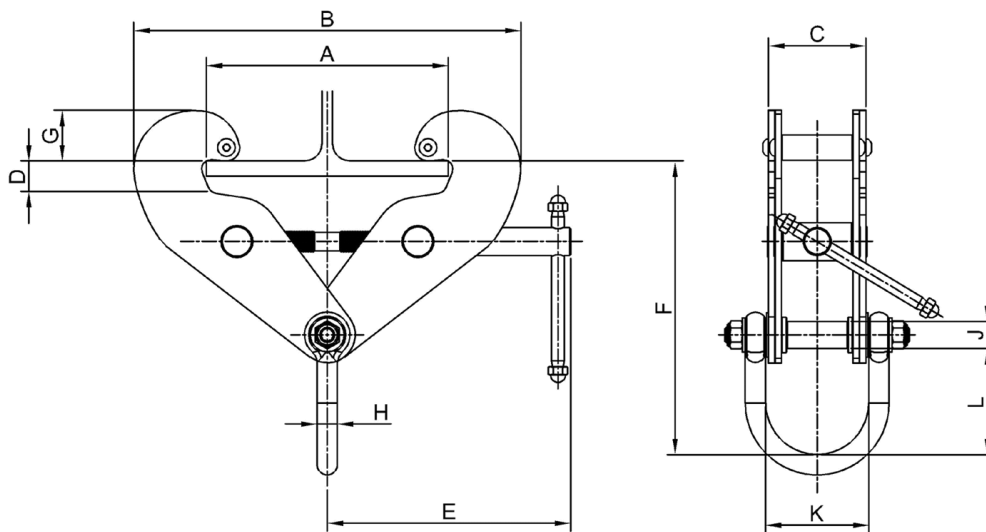
Certification:

Each unit comes fully certified with a test certificate or an EC Declaration of Conformity stating compliance with the essential health and safety requirements of the Machinery Directive 2006/42/EC.

Technical Data

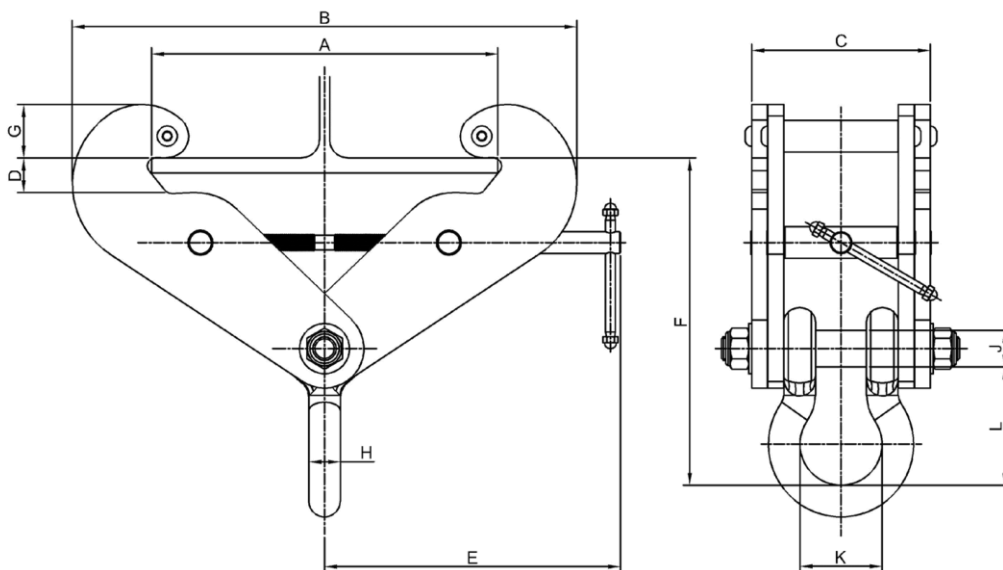
Product Code	Capacity (tonne)	Dimensions (mm)											Net Weight (kg)
		A	B	C	D	E	F	G	H	J	K	L	
BCS-0100	1.0	75-210	182-328	77	26	190	250-225	52-38	16	21	81	83	4.5
BCS-0200	2.0	75-210	182-328	85	26	190	260-236	52-38	18	21	89	94	5.5
BCS-0300	3.0	75-305	214-460	107	35	240	357-311	58-40	22	27	112	105	9.5
BCS-0500	5.0	75-305	214-460	121	35	240	363-315	58-40	27	27	125	111	11.0
BCS-1000	10.0	120-350	295-510	180	36	300	381-330	71-54	32	37	83	120	26.5

Technical Drawing - 1t – 5t

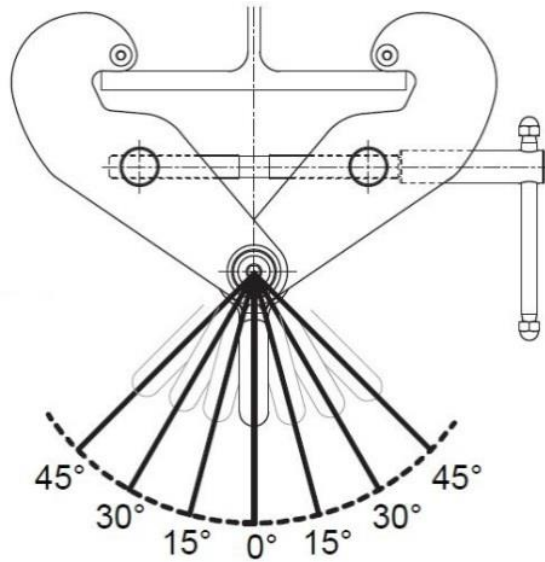


Note: Some stock in the 1t – 5t range may be supplied with a bow shackle rather than a D shackle (as in the drawing of the 10t unit below). If the fitting or dimensions are critical please contact us for information on availability.

Technical Drawing - 10t



Reduction in working load limits when side loads applied:



Angle from vertical	0°	0° - 15°	15° - 30°	30° - 45°
Reduction Factor	Nil	17%	34%	50%
Product Code	WLL	WLL	WLL	WLL
BCS-0100	1000 kg	830 kg	660 kg	500 kg
BCS-0200	2000 kg	1660 kg	1320 kg	1000 kg
BCS-0300	3000 kg	2500 kg	2000 kg	1500 kg
BCS-0500	5000 kg	4100 kg	3300 kg	2500 kg
BCS-1000	10000 kg	8300 kg	6600 kg	5000 kg